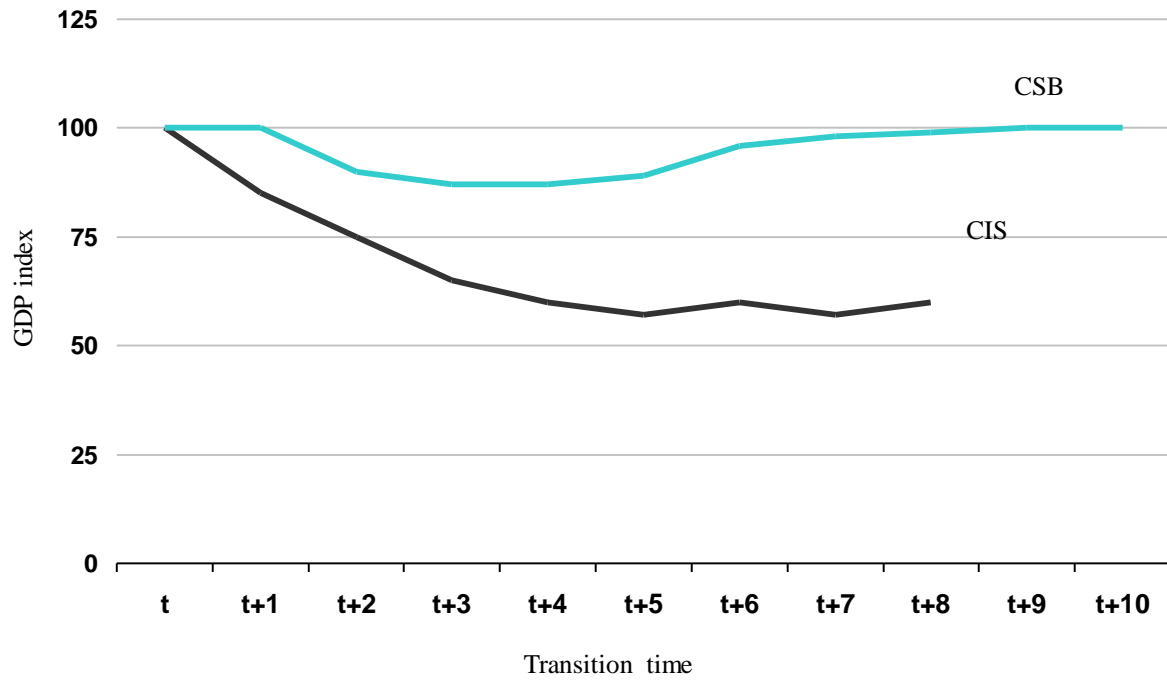


Appendix A:

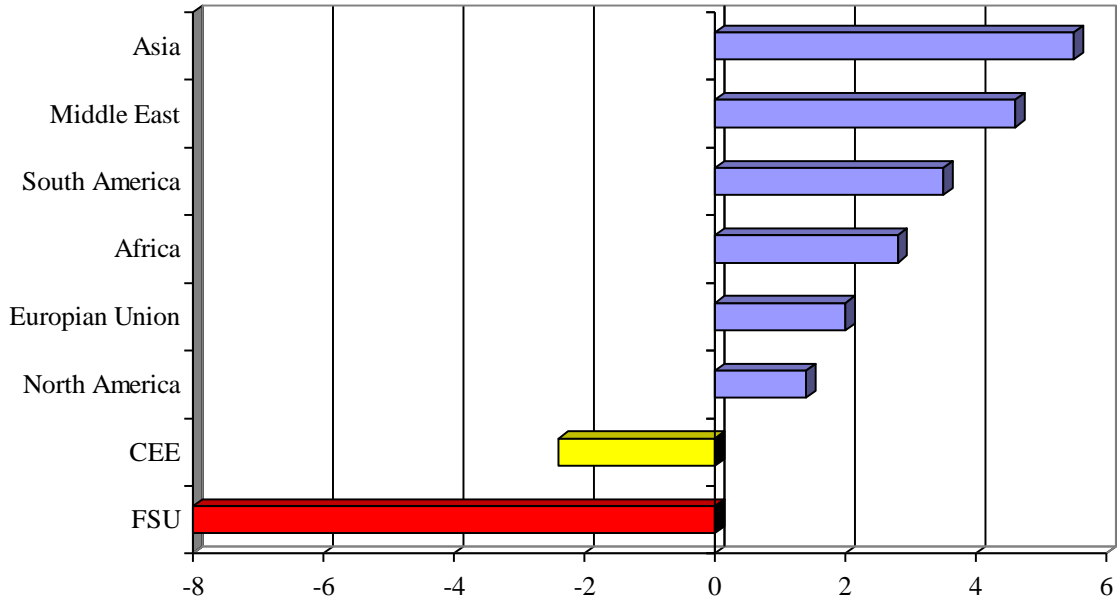
Figure 1. Evolution of Output in Transition Time



Note: The year of transition, t , is taken to be 1989 for the countries in Central and South Eastern Europe and the Baltics (CSB) and 1992 for the countries in the Commonwealth of Independent States (CIS). The GDP index ($t=100$) is a population-weighted average for the countries in each group.
Source: World Bank, SIMA database.

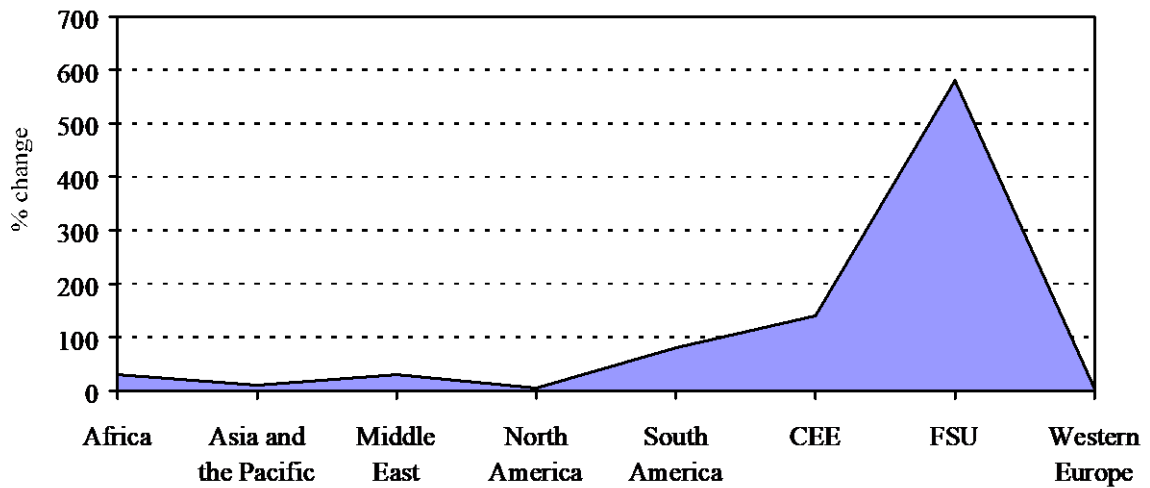
Appendix B.

Figure 2. Global income trends in the 1990s.
(change in income as indicated by average annual growth of GDP, 1989-97)



Source: Calculations based on data published by the United Nations, IMF and the World Bank.

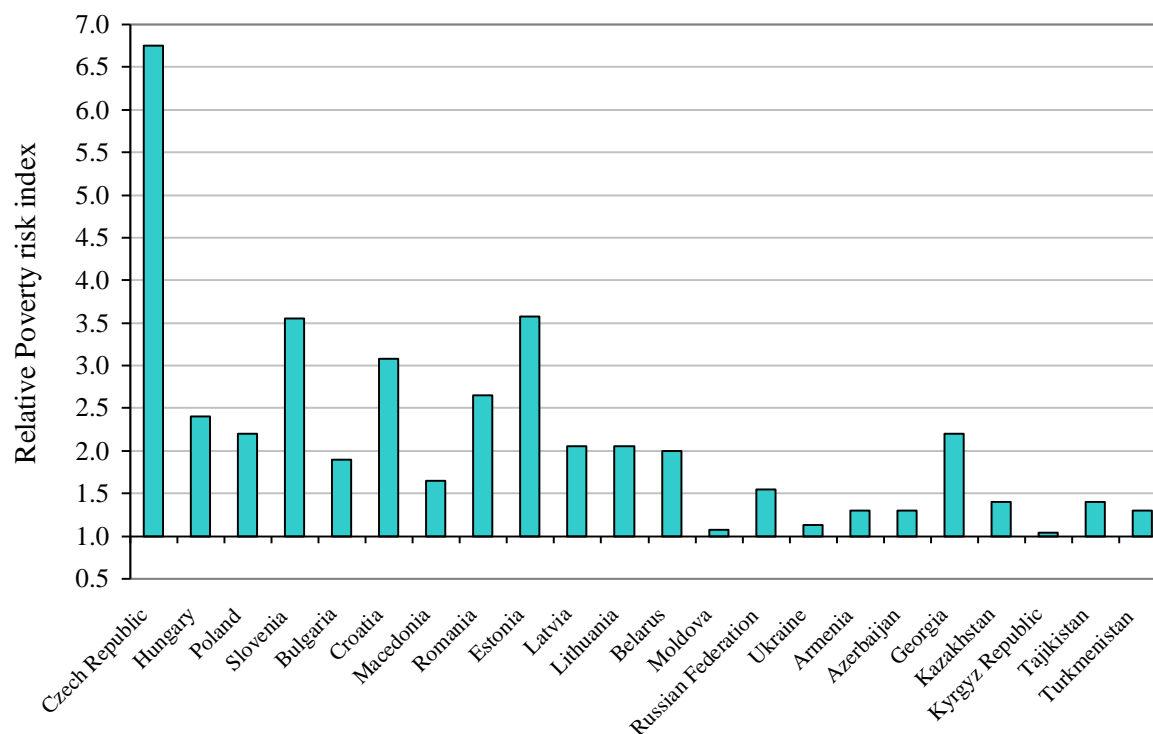
Figure 3. Global inflation trends in the 1990s.
(average annual changes in the consumer price index, 1989-96)



Source: Calculations based on data published by the United Nations and the World Bank.

Appendix C.

Figure 4. Relative Poverty Risk of Households with Unemployed and Inactive Heads

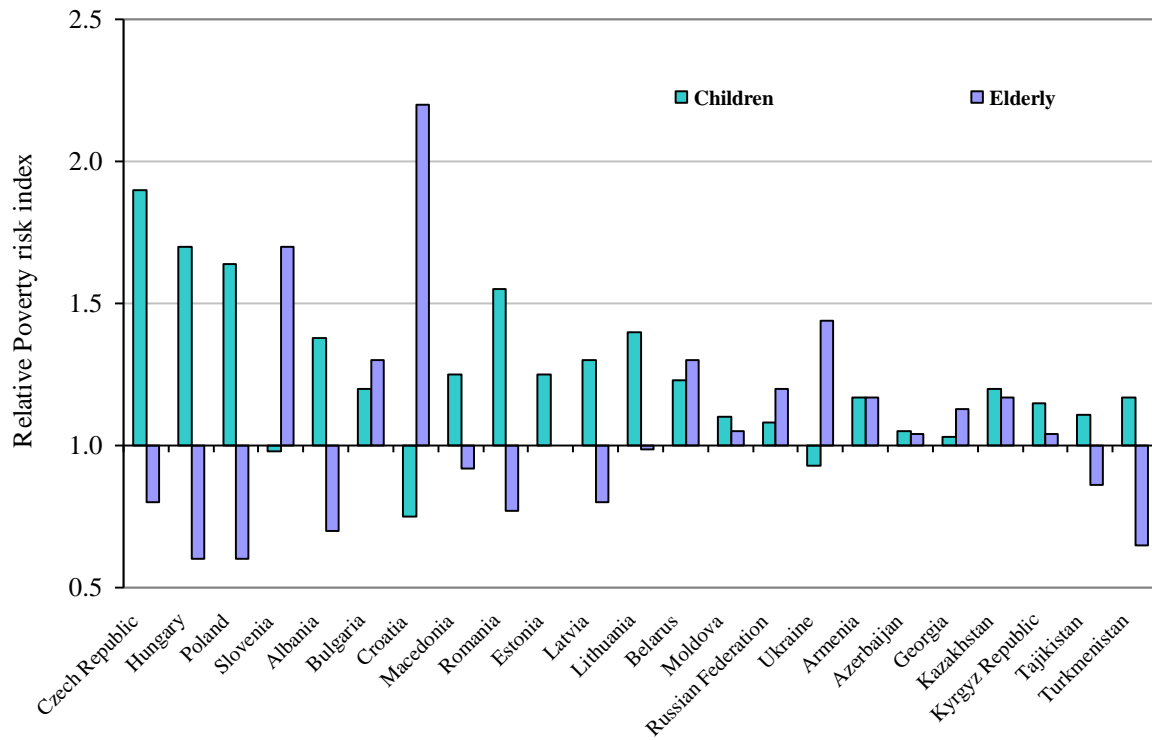


Note: For Armenia, Azerbaijan and Slovenia, the poverty profile included information only on the unemployment. Inactive heads of households were not distinguished from pensioner heads of households, so the information presented in this figure pertains only to unemployed heads of households.

Source: Making Transition Work for Everyone: *Poverty and Inequality in Europe and Central Asia*, The International Bank for Reconstruction and Development/ The World Bank, Washington, D.C., 2000, p.68

Appendix D.

Figure 5. Relative Poverty Risk of Children and Elderly



Source: Making Transition Work for Everyone: *Poverty and Inequality in Europe and Central Asia*, The International Bank for Reconstruction and Development/ The World Bank, Washington, D.C., 2000, p.82

Appendix E:

Paros system defined certain 14 vulnerable groups that are potentially could get allowances.

There are:

- 'I' group invalid
- 'II' group invalid
- 'III' group invalid
- Invalid up to 16 years
- Twins or more children (up to 5 years)
- Pensioners
- Registered unemployed
- Pregnant (20 weeks and more)
- One parent child
- Child of single mother
- Child of divorced parents
- Orphan
- Single pensioner
- 80 years and elder pensioner

APPENDIX G.

Table 4. Gross household expenditures (dram per month). Survey 2000.

Expenditure types	Per household		Per capita	
	Drams	%	Drams	%
Food	21251	55.83	4371	55.6
Goods	4383	11.52	902	11.52
Services	12428	32.65	2556	32.88
Total	38063	100	7828	100

Table 5. Gross household expenditures (dram per month). Survey 1996.

Expenditure types	Per household		Per capita	
	Drams	%	Drams	%
Food	32612	52.1	9094	51.5
Goods	12371	19.7	3517	19.9
Services	17660	28.2	5047	28.5
Total	62643	100	17658	100